

## Microsoft Fabric



Data  
Factory



Synapse Data  
Engineering



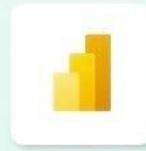
Synapse Data  
Science



Synapse Data  
Warehouse



Synapse Real  
Time Analytics



Power BI



Data  
Activator

# DP-602T00: Implement a Data Warehouse with Microsoft Fabric

## Overview

DP-602T00: Implement a Data Warehouse with Microsoft Fabric is a hands-on, instructor-led course designed to equip data professionals with the skills to build and manage cloud-scale data warehouses using Microsoft Fabric. Over two days, participants will explore Fabric's integrated tools—including Dataflows Gen2, T-SQL, and the SQL Analytics Endpoint—to ingest, transform, and analyze data efficiently. The course covers key aspects such as performance optimization, data governance, and security using Microsoft Purview, making it ideal for data engineers, BI professionals, and anyone looking to modernize their data warehousing approach in a unified analytics environment.

## Prerequisites

**Before attending this course, participants should have:**

- A basic understanding of database concepts and T-SQL
- Familiarity with data warehousing principles
- Prior experience with Microsoft Azure or Power BI is beneficial but not mandatory

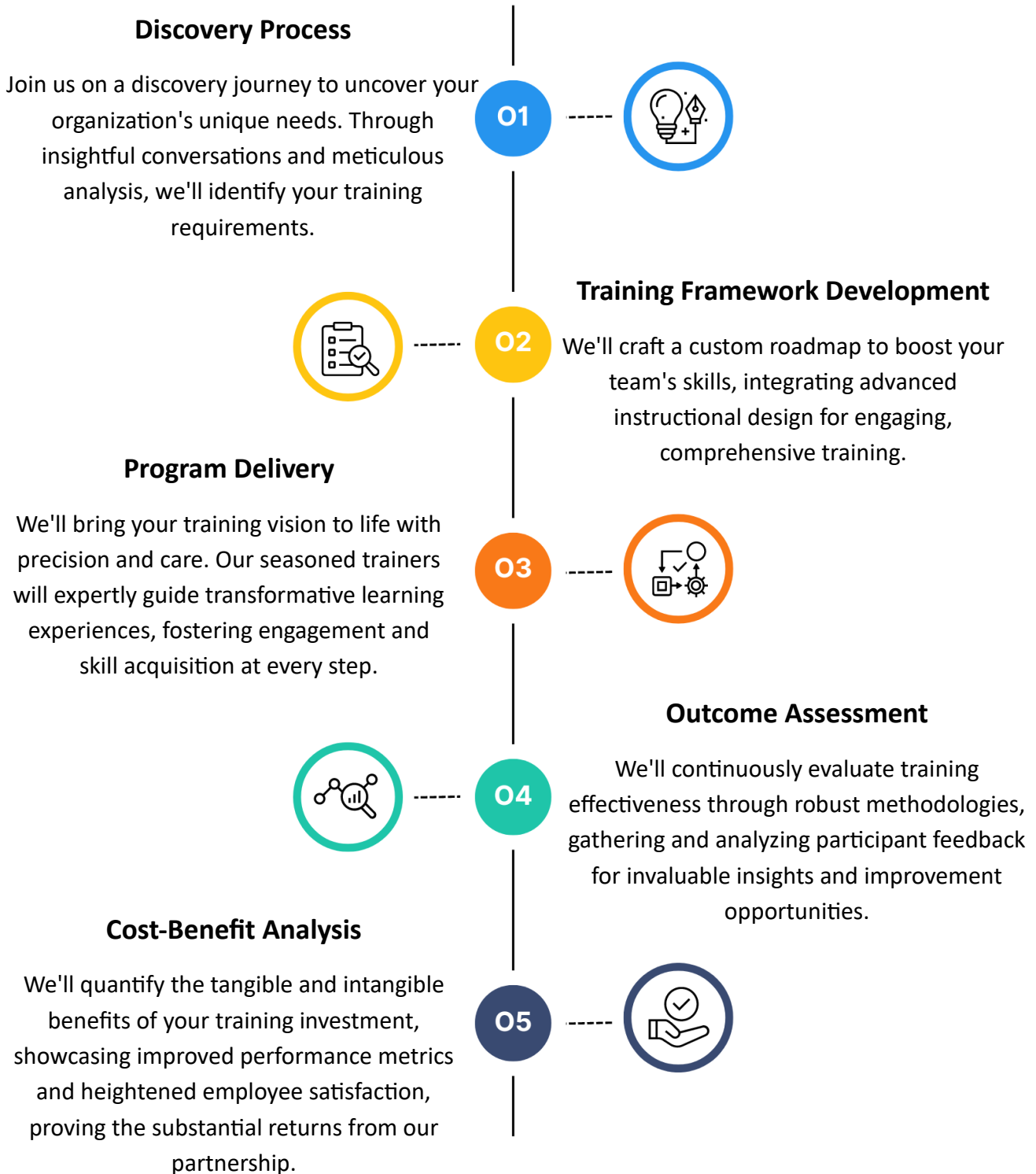
## Course Level

- Beginner

## Course Duration

- 1 Day – 8 Hours

# Creating Tailor - Made Training Programs to Meet Your **Specific Goals**



## Course Outline

Unlock the power of modern data warehousing with Microsoft Fabric, a unified analytics platform designed for the era of AI and cloud-scale analytics. This comprehensive 2-day instructor-led course equips data professionals with the skills to design, implement, and manage data warehouses using Microsoft Fabric's Lakehouse and Warehouse capabilities.

Through hands-on labs and real-world scenarios, participants will learn how to ingest, transform, and serve data efficiently using Fabric's integrated tools like Data Factory, Dataflows Gen2, and SQL Analytics Endpoint. The course also emphasizes best practices for data governance, performance tuning, and scalability in cloud environments.

### **Module 1: Explore end-to-end analytics with Microsoft Fabric**

- Lesson: Describe end-to-end analytics in Microsoft Fabric
- Lesson: Understand data teams and roles that use Fabric
- Lesson: Describe how to enable and use Fabric

### **Module 2: Get started with data warehouses in Microsoft Fabric**

- Lesson: Data warehouse fundamentals
- Lesson: Understand Fabric warehouses
- Lesson: Create a data warehouse in Fabric
- Lesson: Design a data warehouse
- **Lab:** Analyze data in a data warehouse

### **Module 3: Load data into a Microsoft Fabric data warehouse**

- Lesson: Understand ETL (Extract, Transform and Load)
- Lesson: Stage the data
- Lesson: Different data load types
- Lesson: Create tables with T-SQL
- **Lab:** Load data into a warehouse in Microsoft Fabric

### **Module 4: Query a data warehouse in Microsoft Fabric**

- Lesson: Aggregate measures by dimension attributes
- Lesson: Joins in a snowflake schema
- Lesson: DAX calculations
- **Lab:** Query a data warehouse in Microsoft Fabric

### **Module 5: Monitor a Microsoft Fabric data warehouse**

- Lesson: Monitor capacity metrics
- Lesson: Monitor current activity
- Lesson: Monitor queries
- **Lab:** Monitor a data warehouse in Microsoft Fabric

### **Module 6: Secure a Microsoft Fabric data warehouse**

- Lesson: Explore dynamic data masking
- Lesson: Implement row-level security
- Lesson: Implement column-level security
- Lesson: Configure SQL granular permissions using T-SQL
- **Lab:** Secure a warehouse in Microsoft Fabric

# Indus Tech Services

---

## Who We Are....

Indus Tech Services is an IT company that specializes in providing comprehensive training, consulting & implementation services for software solutions designed to address the diverse business challenges faced by organizations today. With a passion for technology and a deep understanding of business processes, Indus Tech is committed to empowering businesses to optimize their operations, boost productivity, and drive sustainable growth.

## Indus Tech Services and Microsoft Partnership

As a proud **Microsoft Partner**, **Indus Tech Services** is uniquely equipped to deliver top-tier training and certification programs designed to meet the evolving needs of today's workforce. Our partnership with Microsoft allows us to offer direct access to the latest tools, resources, and industry insights, ensuring that our courses are aligned with the most current technology trends. This collaboration enables us to provide unparalleled support to our students, helping them gain the skills and knowledge required to excel in their careers. By choosing Indus Tech Services, you're not just learning; you're gaining a competitive edge with Microsoft-backed expertise and certification.

## Why Choose Us...

From time to time, life serves up a profound nudge, urging us to step beyond our routines and make a difference in the world. Indus Tech Services emerged from one such compelling wake-up call. We are not just a company; we are a dedicated force with a belief in providing solutions to organizations, regardless of their size, and we infuse a human touch into everything we do.

## Our Expertise

With over 25 years of collective experience navigating the intricacies of daily business transactions, irrespective of geographical, cultural, time zone, or language barriers, our team has honed their expertise to meet any challenge head-on. This wealth of experience has armed our resources with an unparalleled understanding and skill set to tackle a broad spectrum of obstacles.

## Training

With two decades of unwavering commitment and a global footprint, our company is a true pioneer in the fields of linguistic, transactional, technical, and behavioural training for some of the world's largest corporate entities. Our unparalleled expertise has been refined through years of dedication and innovation, making us the go-to choice for businesses seeking transformative training solutions.

## Consulting

Our company has been at the forefront of providing world-class IT consulting services to organizations spanning the globe. With an extensive and proven track record, we have honed our expertise to meet the ever-evolving technological needs and challenges faced by businesses, regardless of their scale or industry.

## Implementation

Our experience covers a broad spectrum of IT implementation services, including system integration, software deployment, network architecture, cloud migration, and infrastructure setup. We understand that the successful execution of IT projects is pivotal to an organization's growth and efficiency. Therefore, we bring a depth of knowledge and a commitment to delivering results that set us apart.

To know more contact us at [info@industechservices.com](mailto:info@industechservices.com) or call us at +91 - 99961 61170.