



PL – 200

Microsoft Power Platform Functional Consultant

Overview

As a candidate for this exam, you:

- Perform discovery.
- Capture requirements.
- Engage subject matter experts and stakeholders.
- Configure business solutions by using Microsoft Power Platform tools and components.

You create:

- Application enhancements
- Tailored user experiences
- Process automation

As a candidate, you implement the design provided by and in collaboration with a solution architect and the standards, branding, and artifacts established by user experience designers. You implement integrations with third-party applications and services. You generate training documentation, and you facilitate training and enablement.

You must interact and effectively communicate with members of a delivery team, stakeholders, and customer teams while championing for their success. You must have an understanding of application lifecycle management (ALM) practices for Microsoft Power Platform and quality assurance.

You should be familiar with using the following Microsoft Power Platform components:

- Microsoft Dataverse
- Microsoft Power Apps
- Microsoft Power Automate cloud flows
- Microsoft Power Pages
- Microsoft Power Platform environments

You should have proficiency in:

- Data modeling
- User experience design
- Requirements analysis

Prerequisites

Here are the suggested prerequisites for the PL-200 course:

- Basic Understanding of Power Platform
- General Knowledge of Dynamics 365
- Basic Business Process Knowledge
- Fundamental Data Modeling Skills
- Knowledge of Office 365
- Basic Technical Proficiency

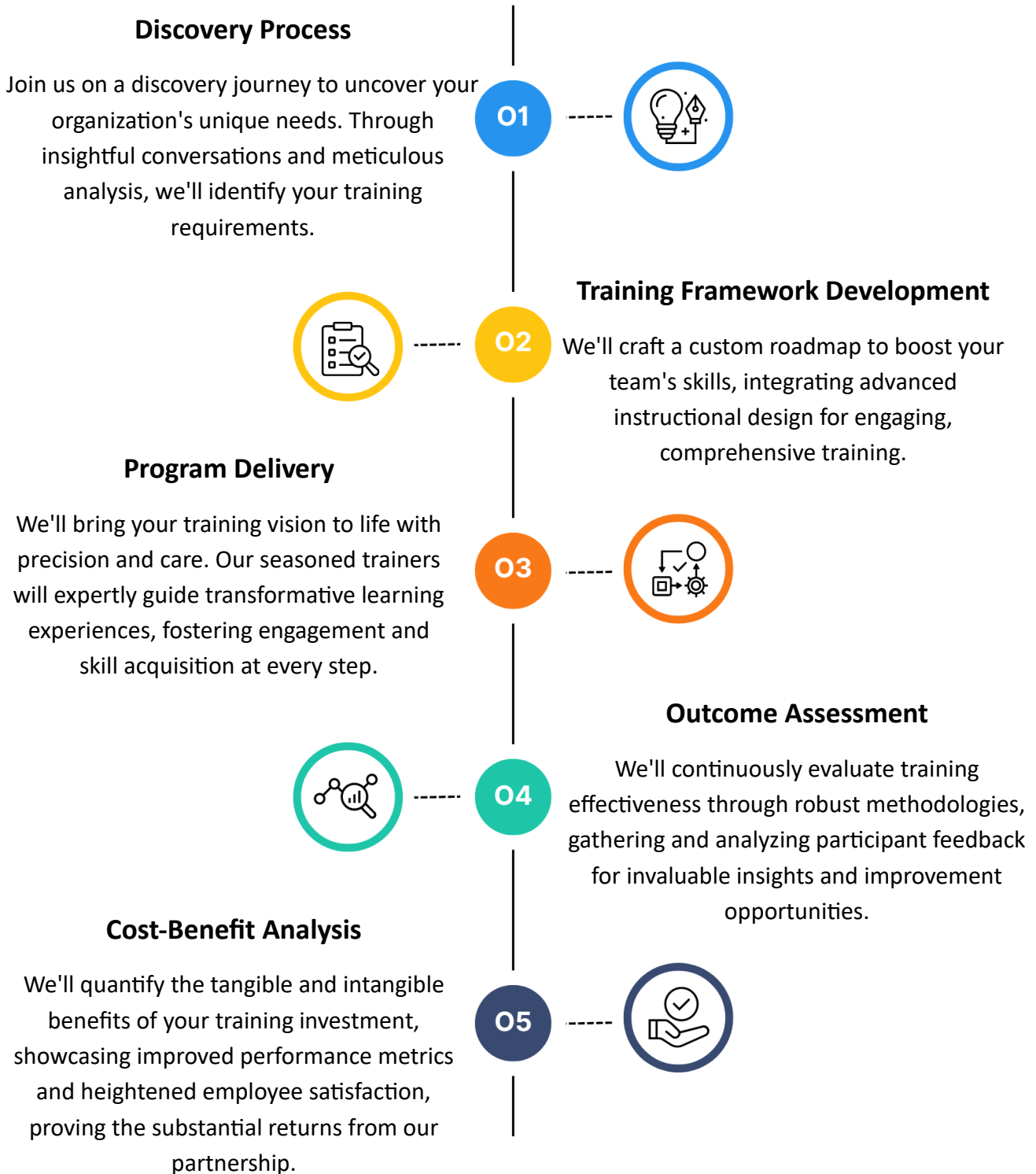
Course Level

- Intermediate Level

Course Duration

- 5 Day – 40 Hours

Creating Tailor - Made Training Programs to Meet Your **Specific Goals**



Course Outline

The PL-200 certification, offered by Microsoft, is designed for individuals aspiring to become proficient Power Platform Functional Consultants. This certification focuses on validating skills in leveraging Microsoft Power Platform to build solutions that streamline and automate business processes. As a Power Platform Functional Consultant, professionals will play a key role in bridging the gap between business stakeholders and technology solutions.

Module 1: Work with Microsoft Dataverse

- Lesson: What is a relational database?
- Lesson: Introduction to Microsoft Dataverse
- Lesson: Manage environments
- Lesson: Manage customizations with solutions
- Lesson: Power Apps related technologies
- Lesson: Create and manage tables in Microsoft Dataverse
- Lesson: Create and manage columns in Microsoft Dataverse
- Lesson: Create relationships between tables in Microsoft Dataverse
- Lesson: Create and define calculated, rollup, and formula columns in Microsoft Dataverse
- **Lab 1.1:** Environments
- **Lab 1.2:** Publisher and solution
- **Lab 1.3:** Import solution
- **Lab 1.4:** Tables
- **Lab 1.5:** Columns
- **Lab 1.6:** Relationships

Module 2: Manage Microsoft Dataverse

- Lesson: Load/export data in Microsoft Dataverse
- Lesson: Manage security in Microsoft Dataverse
- Lesson: Administration options in Microsoft Dataverse
- **Lab 2.1:** Security roles
- **Lab 2.2:** Users and Teams

Module 3: Create Model-Driven Apps

- Lesson: Introduction to Model-driven apps
- Lesson: Design and create model-driven apps
- Lesson: Configure forms
- Lesson: Configure views
- Lesson: Configure charts
- Lesson: Configure dashboards
- Lesson: Embed canvas apps in model-driven apps
- Lesson: Configure custom pages
- Lesson: Customize the command bar
- **Lab 3.1:** Forms
- **Lab 3.2:** Views
- **Lab 3.3:** Command bar

Module 4: Create Canvas Apps

- Lesson: Introduction to Canvas Apps
- Lesson: Customize a Canvas App
- Lesson: Navigation in a Canvas App
- Lesson: Power Fx formulas and variables
- Lesson: Error handling
- Lesson: Connect to other data in canvas apps
- Lesson: Describe Power Apps cards
- **Lab 4.1:** Enhance a canvas app
- **Lab 4.2:** Create a custom page

Module 5: Make portals in Power Pages

- Lesson: Introduction to Power Pages
- Lesson: Configure pages, forms, and navigation
- Lesson: Explore design studio
- Lesson: Advanced Power Pages features
- Lesson: Power Pages website security
- Lesson: Power Pages authentication
- **Lab 5.1** Build a Power Pages portal

Module 6: Build automation with Power Automate

- Lesson: Introduction to automation in Microsoft Dataverse
- Lesson: Introduction to Power Automate cloud flows
- Lesson: Create Power Automate cloud flows
- Lesson: Use Dataverse triggers and actions in Power Automate cloud flows
- Lesson: Introduction to expressions in Power Automate
- Lesson: Test and troubleshoot Power Automate cloud flows
- Lesson: Administer Power Automate cloud flows

- **Lab 6.1** Cloud flows

Module 7: Logic and process automation

- Lesson: Define and create business rules
- Lesson: Create business process flows
- Lesson: Configure Dataverse classic workflows
- Lesson: Write and use Power Fx functions and formulas
- Lesson: Describe how to use Dataverse actions directly from Power Fx
- Lesson: Configure low-code plug-ins
- **Lab 7.1:** Business rules

Module 8: Visualize data with Power BI

- Lesson: Microsoft Dataverse reporting options
- Lesson: Get started with Power BI
- Lesson: Use Power BI with Microsoft Power Platform

Module 9: Application Lifecycle Management

- Introduction to solutions for Microsoft Power Platform
- Import and export solutions
- Dataverse tools to support solutions

Module 10: Manage interoperability with other services

- Configure email integration
- Configure document management
- Work with Microsoft Word templates

Indus Tech Services

Who We Are....

Indus Tech Services is an IT company that specializes in providing comprehensive training, consulting & implementation services for software solutions designed to address the diverse business challenges faced by organizations today. With a passion for technology and a deep understanding of business processes, Indus Tech is committed to empowering businesses to optimize their operations, boost productivity, and drive sustainable growth.

Indus Tech Services and Microsoft Partnership

As a proud **Microsoft Partner**, **Indus Tech Services** is uniquely equipped to deliver top-tier training and certification programs designed to meet the evolving needs of today's workforce. Our partnership with Microsoft allows us to offer direct access to the latest tools, resources, and industry insights, ensuring that our courses are aligned with the most current technology trends. This collaboration enables us to provide unparalleled support to our students, helping them gain the skills and knowledge required to excel in their careers. By choosing Indus Tech Services, you're not just learning; you're gaining a competitive edge with Microsoft-backed expertise and certification.

Why Choose Us...

From time to time, life serves up a profound nudge, urging us to step beyond our routines and make a difference in the world. Indus Tech Services emerged from one such compelling wake-up call. We are not just a company; we are a dedicated force with a belief in providing solutions to organizations, regardless of their size, and we infuse a human touch into everything we do.

Our Expertise

With over 25 years of collective experience navigating the intricacies of daily business transactions, irrespective of geographical, cultural, time zone, or language barriers, our team has honed their expertise to meet any challenge head-on. This wealth of experience has armed our resources with an unparalleled understanding and skill set to tackle a broad spectrum of obstacles.

Training

With two decades of unwavering commitment and a global footprint, our company is a true pioneer in the fields of linguistic, transactional, technical, and behavioural training for some of the world's largest corporate entities. Our unparalleled expertise has been refined through years of dedication and innovation, making us the go-to choice for businesses seeking transformative training solutions.

Consulting

Our company has been at the forefront of providing world-class IT consulting services to organizations spanning the globe. With an extensive and proven track record, we have honed our expertise to meet the ever-evolving technological needs and challenges faced by businesses, regardless of their scale or industry.

Implementation

Our experience covers a broad spectrum of IT implementation services, including system integration, software deployment, network architecture, cloud migration, and infrastructure setup. We understand that the successful execution of IT projects is pivotal to an organization's growth and efficiency. Therefore, we bring a depth of knowledge and a commitment to delivering results that set us apart.

To know more contact us at info@industechservices.com or call us at +91 - 99961 61170.